

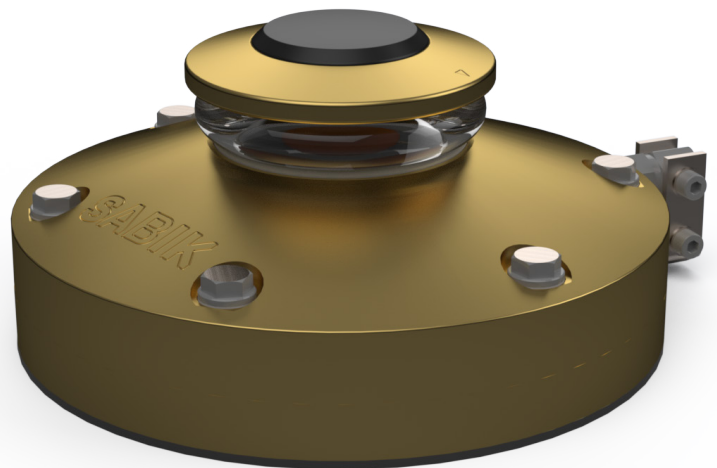


## MPV II

### Ice buoy lantern for the most demanding conditions

The MPV II is the toughest ice buoy lantern ever produced, boasting a robust bronze alloy body and a thick molded polycarbonate lens that can withstand the crushing pressures of ice and prolonged submersion. It serves as a modern replacement for the renowned MPV LED, with completely re-designed optics. The MPV II's reduced power consumption doubles the battery replacement cycle, while its tricolor functionality minimizes required stock significantly. Maintenance and monitoring are enhanced with Bluetooth control and new remote monitoring technology, as well as remarkably improved lantern positioning accuracy.

- Strong bronze alloy housing
- Fully waterproof and can tolerate long-term submersion of up to 100 meters
- Drop in replacement for MPV LED, taking advantage of the identical lower flange
- Exceptionally low power consumption enabling a battery replacement cycle of over 3 years
- Visual range up to 8 NM ( $T_c = 0,74$ )
- Bluetooth configuration
- Tricolor functionality, white/red/green or yellow/red/green in one lantern
- Long-range LTE-M remote monitoring technology
- GNSS position monitoring, accuracy of 2,5m CEP
- Event log and calendar functionality
- Satellite synchronization with an adjustable delay



## Performance

Product	Max peak intensity red	Max peak intensity green	Max peak intensity yellow	Max peak intensity white
MPV II	370 cd	600 cd	370 cd	
MPV II	370 cd	600 cd		600 cd

## Main Technical Specification

Lens visual/Mechanical diameter	132 mm
Lens material	UV stabilized Polycarbonate
Light source	High-intensity LEDs
Vertical divergence (wide lens)	10° @ 50% (±1°) of peak intensity
Unit lifetime	Up to 10 years
Weight	24.6 kg
Temperature range	-40°C to 60°C / -40°F to 140°F
Input voltage range	8 – 32 VDC
Power consumption	max 9 W
Degree of protection	IP 68

## Order Overview MPV II

### Product code

Code	Note
MPV2-CCC-10D-OPT	
CCC	Colors RGY or RGW
10D	Vertical divergence 10°
OPT	Options

### Option matrix

OPT 4L: GNSS sync	Integrated GNSS sync including GNSS antenna
OPT 9L: LightGuard LTE-M + GNSS	Integrated LTE-M based monitoring including LTE-M/GNSS antennas

